

PETALUMA TOWN PLAZA

FOR LEASE

HIGHLY VISIBLE END CAP AVAILABLE

±3,920 - ± 5,710 SF



JOHN SCHAEFER
Principal
(415) 235-8115
john@keystonerea.com
CA LIC: 0125740

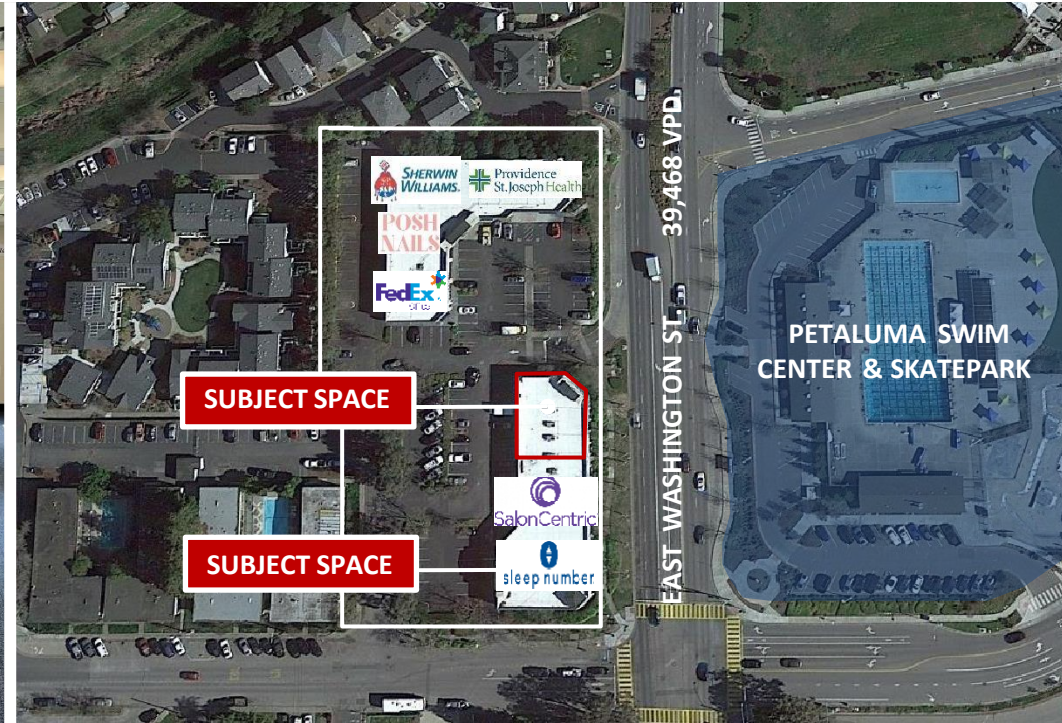
GREY BRADSHAW
Associate
(415) 728-7036
grey@keystonerea.com
CA LIC: 02200913









KEYSTONE REAL ESTATE ADVISORS, INC.
1129 Industrial Avenue, #205
Petaluma, CA 94952
CA LIC: 02117431
www.keystonerea.com

HIGHLIGHTS

901 East Washington St.
Petaluma, CA 94952



-  Daily needs Center situated on Petaluma's main retail thoroughfare (East Washington St) in Petaluma, CA
-  Located across the street from East Washington Place, Sonoma-Marin Fairgrounds and Petaluma Swim Center.
-  **Space A: ±5,710 SF Standard Retail Space (Available now)**
Space B: ±3,920 SF Standard Retail Space (Available now)
-  Subject site has prominent positioning and tremendous visibility to East Washington St. (39,468 VPD)

-  Nearby major retailers include: Target, Whole Foods, Sprouts, Safeway, Raley's, Dick's Sporting Goods, CVS, & more
-  Direct access to and from HWY 101

DEMOGRAPHICS	1 MILE	3 MILES	5 MILES
2022 Population	17,652	64,419	70,502
Daytime Population	13,772	49,178	59,178
Avg. HH Income	\$91,430	\$104,517	\$161,147

JOHN SCHAEFER
Principal
(415) 235-8115
john@keystonerea.com
CA LIC: 0125740

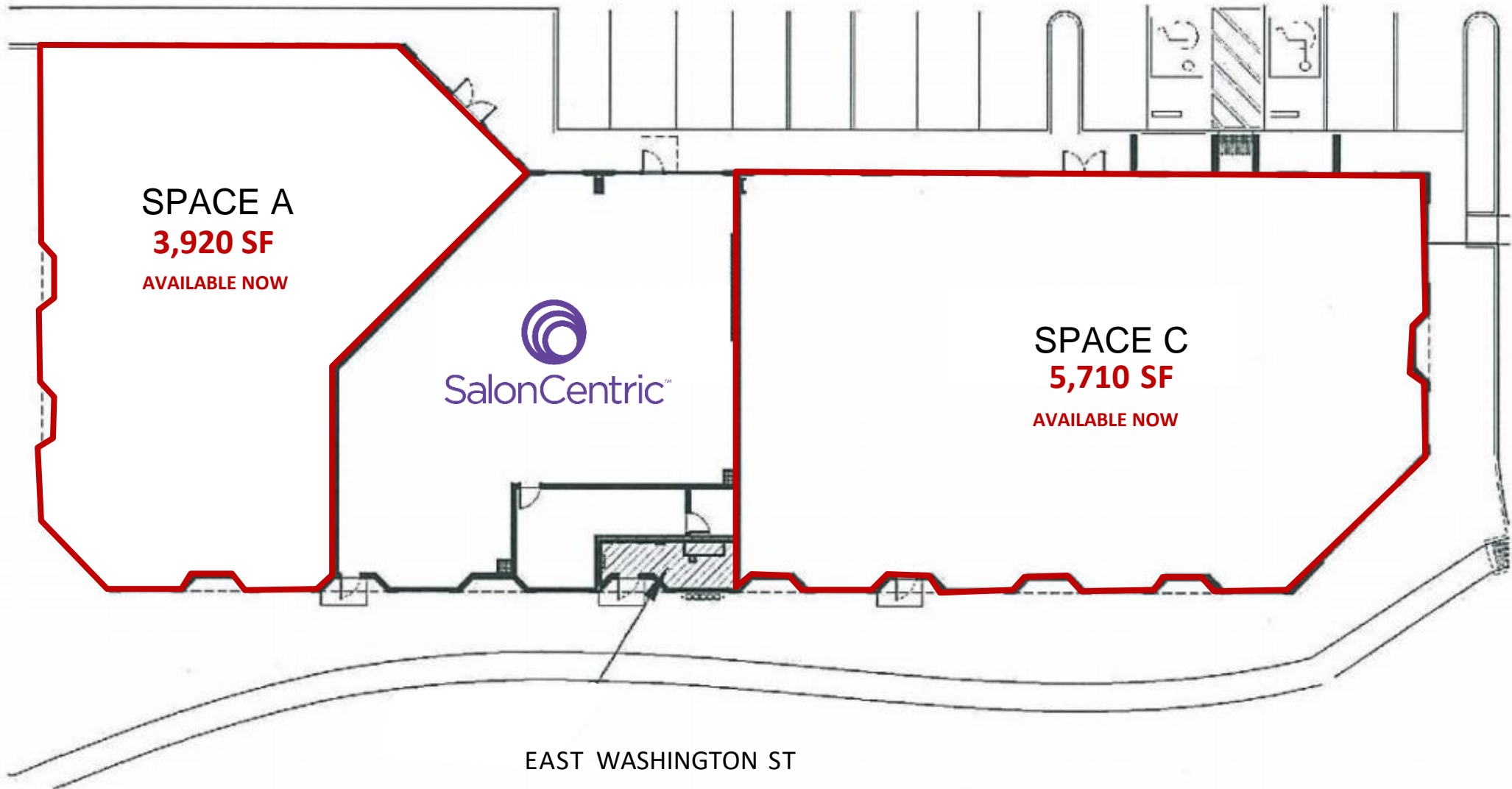
GREY BRADSHAW
Associate
(415) 728-7036
grey@keystonerea.com
CA LIC: 02200913



KEYSTONE REAL ESTATE ADVISORS, INC.
1129 Industrial Avenue, #205
Petaluma, CA 94952
CA LIC: 02117431
www.keystonerea.com

SPACE PLAN

901 East Washington St.
Petaluma, CA 94952



JOHN SCHAEFER
Principal
(415) 235-8115
john@keystonerea.com
CA LIC: 0125740

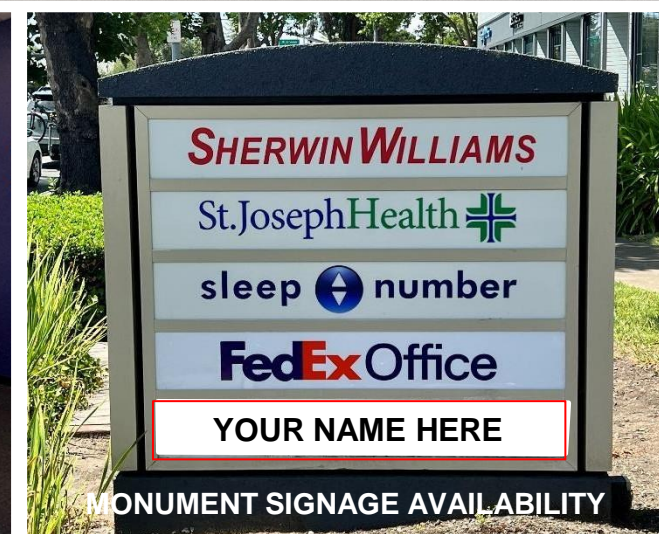
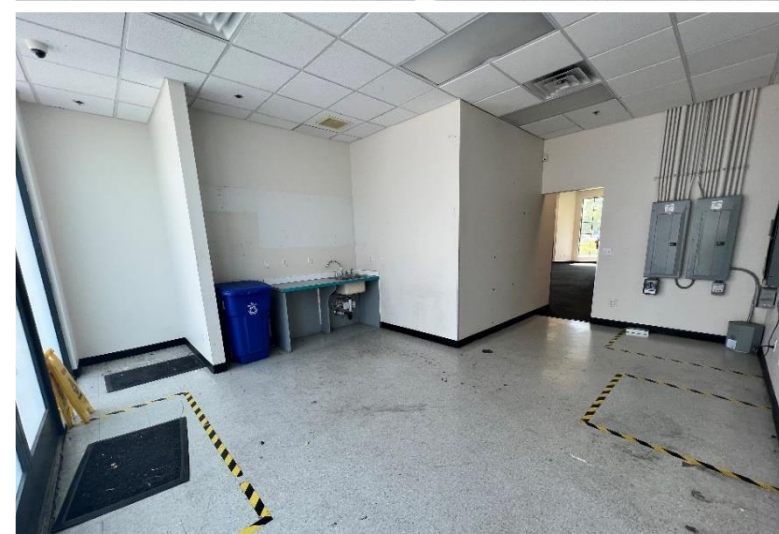
GREY BRADSHAW
Associate
(415) 728-7036
grey@keystonerea.com
CA LIC: 02200913



KEYSTONE REAL ESTATE ADVISORS, INC.
1129 Industrial Avenue, #205
Petaluma, CA 94952
CA LIC: 02117431
www.keystonerea.com

SUBJECT SPACE

901 East Washington St.
Petaluma, CA 94952



MONUMENT SIGNAGE AVAILABILITY

JOHN SCHAEFER
Principal
(415) 235-8115
john@keystonerea.com
CA LIC: 0125740

GREY BRADSHAW
Associate
(415) 728-7036
grey@keystonerea.com
CA LIC: 02200913



KEYSTONE REAL ESTATE ADVISORS, INC.
1129 Industrial Avenue, #205
Petaluma, CA 94952
CA LIC: 02117431
www.keystonerea.com

CENTER PHOTOS

901 East Washington St.
Petaluma, CA 94952



JOHN SCHAEFER
Principal
(415) 235-8115
john@keystonerea.com
CA LIC: 0125740

GREY BRADSHAW
Associate
(415) 728-7036
grey@keystonerea.com
CA LIC: 02200913



KEYSTONE REAL ESTATE ADVISORS, INC.
1129 Industrial Avenue, #205
Petaluma, CA 94952
CA LIC: 02117431
www.keystonerea.com

RETAIL OVERVIEW

901 East Washington St.
Petaluma, CA 94952



DEER CREEK VILLAGE

- Friedman's HOME IMPROVEMENT
- CITY SPORTS CLUB
- Davita
- DUNKIN' DONUTS
- the Habit BURGER GRILL

THE PLAZA NORTH & SOUTH

- Raley's
- ROSS DRESS FOR LESS
- CVS
- LOLA'S
- GNC
- TRADER JOE'S
- Starbucks
- Pollo Loco
- McDonald's
- crumbl cookies
- petco

Washington Square

- SAFeway
- planet fitness
- Party City
- pet food express
- STAPLES

EAST WASHINGTON PLACE

- TARGET
- DICK'S SPORTING GOODS
- SPROUTS FARMERS MARKET
- HomeGoods
- PETSMART
- TJ-MAXX
- BevMo!
- CHASE

WHOLE FOODS MARKET

CVS

Starbucks

SONOMA-MARIN SMART AREA RAIL TRANSIT

HISTORIC DOWNTOWN PETALUMA

PETALUMA SWIM CENTER & SKATEPARK

SONOMA-MARIN FAIR GROUNDS

PETALUMA REGIONAL LIBRARY

SUBJECT SITE

2000 ft

