

San Pablo SUPERMARKET

San Pablo College Center

2300 El Portal Drive San Pablo,
CA | Contra Costa County

Retail Space for Lease

- Vacancies: 1,308 SF - 8,200 SF
- Easy Access, Great Visibility, Ample Parking
- Adjacent to Walgreens and AutoZone

JOHN SCHAEFER
415-235-8115 Direct
john@keystonerealestate.com
CA License #01251740

 **KEYSTONE**
REAL ESTATE ADVISORS



PROPERTY HIGHLIGHTS

- San Pablo College Center is in the Heart of Contra Costa County
- Located Within Walking Distance of Contra Costa College, This Bustling Community is Full of Life and Heavy Pedestrian Traffic
- Anchored By San Pablo Supermarket, Walgreens, and AutoZone
- Other Tenants Include: AT&T, Starbucks Drive-Thru, Subway, Domino's Pizza, Rockin' Crawfish, and Much More
- Situated at the Corner of San Pablo Ave. and Laurie Ln.
- San Pablo Avenue- 16,276 ADT



JOHN SCHAEFER

415-235-8115 Direct
john@keystonerealestate.com
CA License #01251740



SAN PABLO COLLEGE CENTER SITE PLAN



AT&T



#	Tenant	SF
1	San Pablo Supermarket	33,000
2	Fred Loya Insurance	1,300
3	Domino's Pizza	2,800
4	Pro Spa	1,386
5	Moku Hawaiian BBQ	1,387
6	Subway	1,296
7	AVAILABLE	5,441
8	Cricket Wireless	1,306
9	AVAILABLE	1,308
10	El Cuscatlán	4,077
11	Armed Forces	3,615
12	AT&T	1,944
13	CC Dental	2,520
14	Starbucks	1,750
15	Childcare Center	4,709
16	Rockin Crawfish	1,387
17	Metro PCS	1,296
18	Metro PCS	1,296
19	Yummy House	2,800
20	Eyebrow Palace	1,386
21	Limon Yogurt	1,151
22	Lee's Garden	2,000
23	AVAILABLE	2,370
24	AVAILABLE	5,830
26	Suki's Kitchen	4,134
27	Vocational Institute	1,210

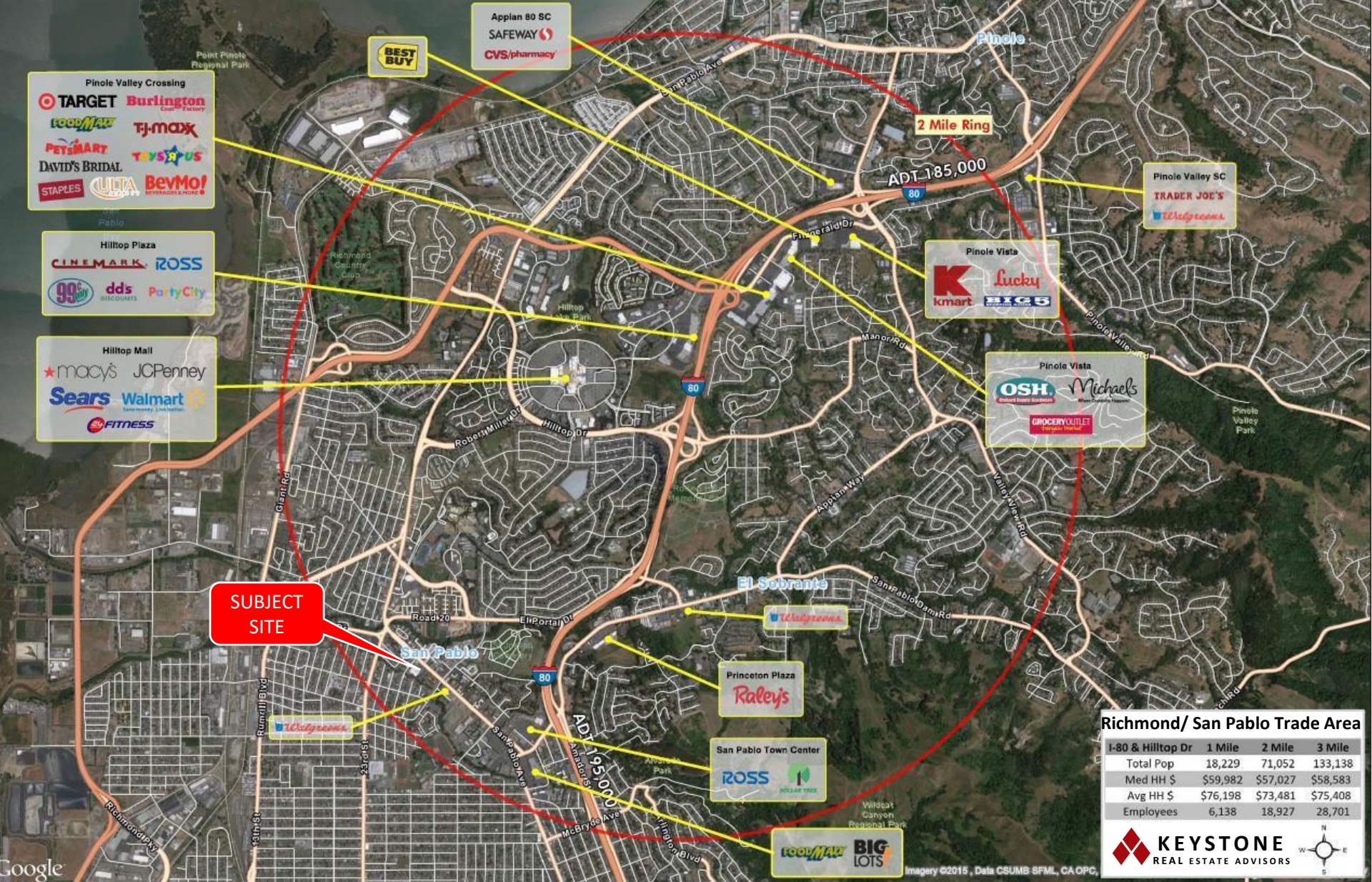
JOHN SCHAEFER

415-235-8115 Direct

john@keystonerea.com

CA License #01251740





JOHN SCHAEFER

415-235-8115 Direct

john@keystonerea.com

CA License #01251740



DEMOGRAPHICS San Pablo College Center

Key Facts

151,355

Population



3.0

Average Household Size

35.0

Median Age

\$64,493

Median Household Income

Education

23%

No High School Diploma



29%

Some College



24%

High School Graduate



24%

Bachelor's/ Grad / Pr of Degree

Income



\$64,493

Median Household Income



\$28,267

Per Capita Income



\$66,584

Median Net Worth

Business



3,483

Total Businesses



34,336

Total Employees

Employment

White Collar

50%

Blue Collar

27%

Services

23%

17.0%

Unemployment Rate

Annual Household Spending



\$2,133

Apparel & Services



\$165

Computer & Hardware



\$3,779

Eating Out



\$5,237

Groceries



\$4,968

Health Care

© 2021 Keystone Real Estate Advisors, Inc. (KREA) The information contained in this document has been obtained from sources believed reliable. While KREA does not doubt its accuracy, KREA has not verified it and makes no guarantee, warranty or representation about it. It is your responsibility to independently confirm its accuracy and completeness. Any projections, opinions, assumptions or estimates used are for example only and do not represent the current or future performance of the property. The value of this transaction to you depends on tax and other factors which should be evaluated by your tax, financial and legal advisors. You and your advisors should conduct a careful, independent investigation of the property to determine to your satisfaction the suitability of the property for your needs. KREA and the KREA logo are service marks of Keystone Real Estate Advisors, Inc. and/or its affiliated or related companies in the United States and other countries. All other marks displayed on this document are the property of their respective owners. Photos herein are the property of their respective owners and use of these images without the express written consent of the owner is prohibited.

JOHN SCHAEFER

415-235-8115 Direct

john@keystonerea.com

CA License #01251740

