

# PETALUMA TOWN PLAZA

# FOR LEASE

HIGHLY VISIBLE END CAP AVAILABLE

±5,686 SF



**JOHN SCHAEFER**  
Principal  
(415) 235-8115  
[john@keystonerea.com](mailto:john@keystonerea.com)  
CA LIC: 0125740

**GREY BRADSHAW**  
Associate  
(415) 728-7036  
[grey@keystonerea.com](mailto:grey@keystonerea.com)  
CA LIC: 02200913

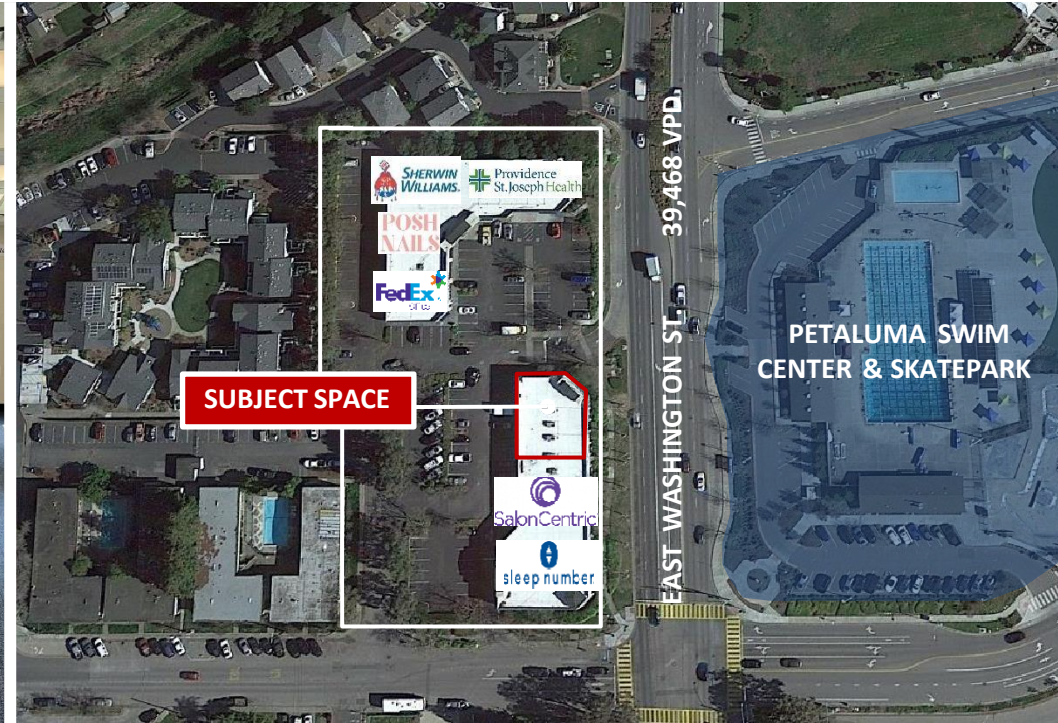


**KEYSTONE REAL ESTATE ADVISORS, INC.**  
1129 Industrial Avenue, #205  
Petaluma, CA 94952  
CA LIC: 02117431  
[www.keystonerea.com](http://www.keystonerea.com)



# HIGHLIGHTS

901 East Washington St.  
Petaluma, CA 94952



Daily needs Center situated on Petaluma's main retail thoroughfare (East Washington St) in Petaluma, CA



Located across the street from East Washington Place, Sonoma-Marin Fairgrounds and Petaluma Swim Center.



**5,686 SF Standard Retail Space**



Subject site has prominent positioning and tremendous visibility to East Washington St. (39,468 VPD)



Nearby major retailers include: Target, Whole Foods, Sprouts, Safeway, Raley's, Dick's Sporting Goods, CVS, & more



Direct access to and from HWY 101

DEMOGRAPHICS	1 MILE	3 MILES	5 MILES
2022 Population	17,652	64,419	70,502
Daytime Population	13,772	49,178	59,178
Avg. HH Income	\$91,430	\$104,517	\$161,147

**JOHN SCHAEFER**  
Principal  
(415) 235-8115  
[john@keystonerea.com](mailto:john@keystonerea.com)  
CA LIC: 0125740

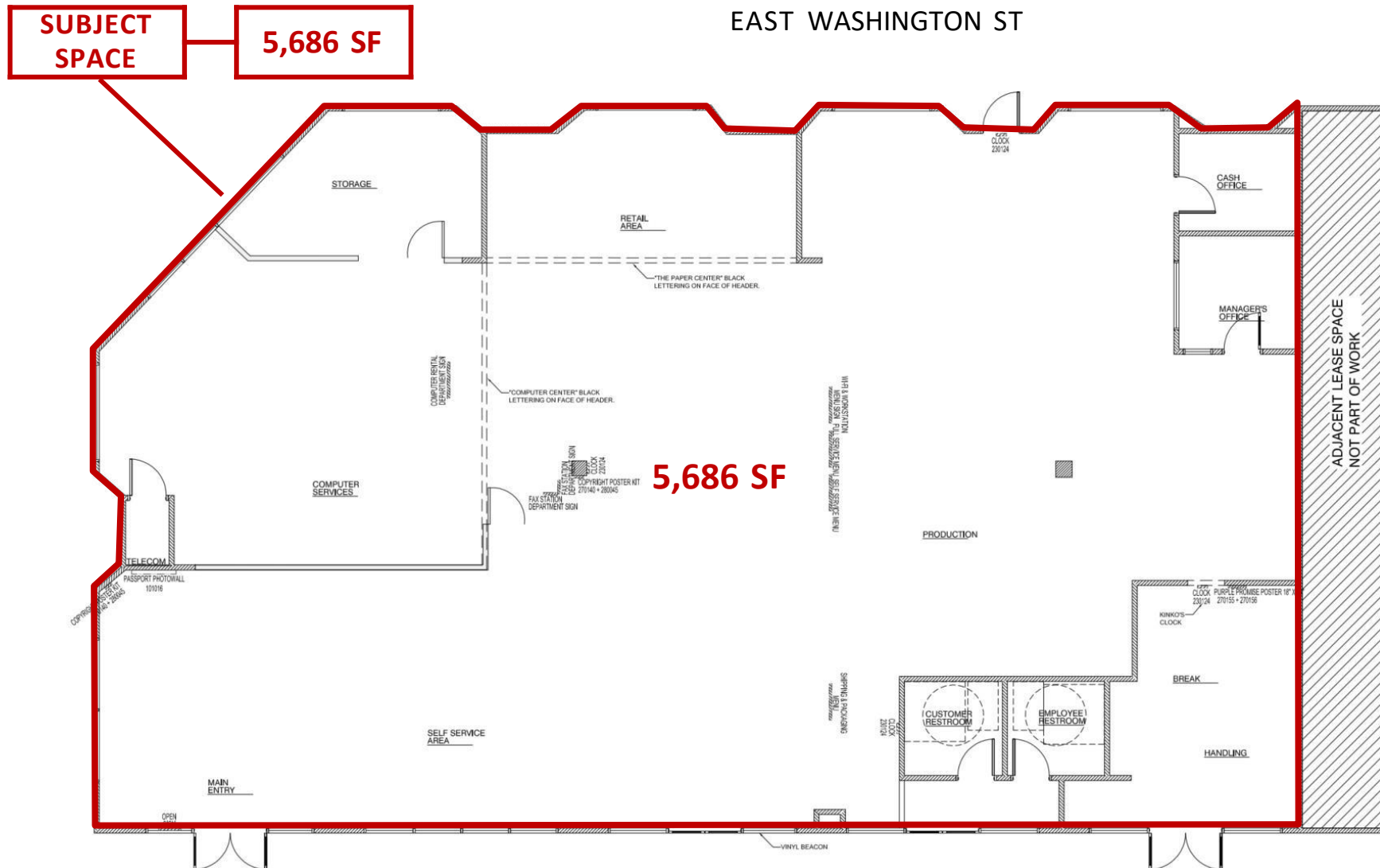
**GREY BRADSHAW**  
Associate  
(415) 728-7036  
[grey@keystonerea.com](mailto:grey@keystonerea.com)  
CA LIC: 02200913



**KEYSTONE REAL ESTATE ADVISORS, INC.**  
1129 Industrial Avenue, #205  
Petaluma, CA 94952  
CA LIC: 02117431  
[www.keystonerea.com](http://www.keystonerea.com)

# SPACE PLAN

901 East Washington St.  
Petaluma, CA 94952



© 2023 Keystone Real Estate Advisors, Inc. (KREA) The information contained in this document has been obtained from sources believed reliable. While KREA does not doubt its accuracy, KREA has not verified it and makes no guarantee, warranty or representation about it. It is your responsibility to independently confirm its accuracy and completeness. Any projections, opinions, assumptions or estimates used are for example only and do not represent the current or future performance of the property. The value of this transaction to you depends on tax and other factors which should be evaluated by your tax, financial and legal advisors. You and your advisors should conduct a careful, independent investigation of the property to determine to your satisfaction the suitability of the property for your needs. KREA and the KREA logo are service marks of Keystone Real Estate Advisors, Inc. and/or its affiliated or related companies in the United States and other countries. All other marks displayed on this document are the property of their respective owners. Photos herein are the property of their respective owners and use of these images without the express written consent of the

**JOHN SCHAEFER**  
Principal  
(415) 235-8115  
[john@keystonerea.com](mailto:john@keystonerea.com)  
CA LIC: 0125740

**GREY BRADSHAW**  
Associate  
(415) 728-7036  
[grey@keystonerea.com](mailto:grey@keystonerea.com)  
CA LIC: 02200913

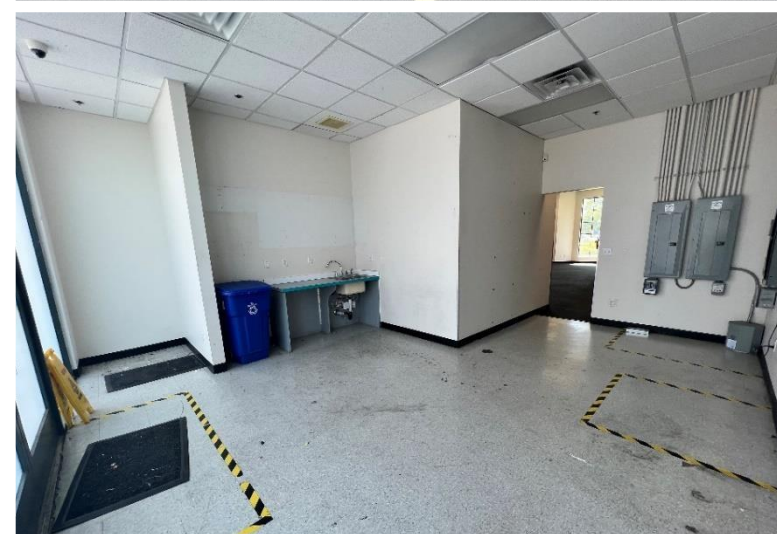


**KEYSTONE REAL ESTATE ADVISORS, INC.**  
1129 Industrial Avenue, #205  
Petaluma, CA 94952  
CA LIC: 02117431  
[www.keystonerea.com](http://www.keystonerea.com)



# SUBJECT SPACE

901 East Washington St.  
Petaluma, CA 94952



MONUMENT SIGNAGE AVAILABILITY

**JOHN SCHAEFER**  
Principal  
(415) 235-8115  
[john@keystonerea.com](mailto:john@keystonerea.com)  
CA LIC: 0125740

**GREY BRADSHAW**  
Associate  
(415) 728-7036  
[grey@keystonerea.com](mailto:grey@keystonerea.com)  
CA LIC: 02200913



**KEYSTONE REAL ESTATE ADVISORS, INC.**  
1129 Industrial Avenue, #205  
Petaluma, CA 94952  
CA LIC: 02117431  
[www.keystonerea.com](http://www.keystonerea.com)



# CENTER PHOTOS

901 East Washington St.  
Petaluma, CA 94952



**JOHN SCHAEFER**  
Principal  
(415) 235-8115  
[john@keystonerealestate.com](mailto:john@keystonerealestate.com)  
CA LIC: 0125740

**GREY BRADSHAW**  
Associate  
(415) 728-7036  
[grey@keystonerealestate.com](mailto:grey@keystonerealestate.com)  
CA LIC: 02200913



**KEYSTONE REAL ESTATE ADVISORS, INC.**  
1129 Industrial Avenue, #205  
Petaluma, CA 94952  
CA LIC: 02117431  
[www.keystonerealestate.com](http://www.keystonerealestate.com)



# RETAIL OVERVIEW

901 East Washington St.  
Petaluma, CA 94952

